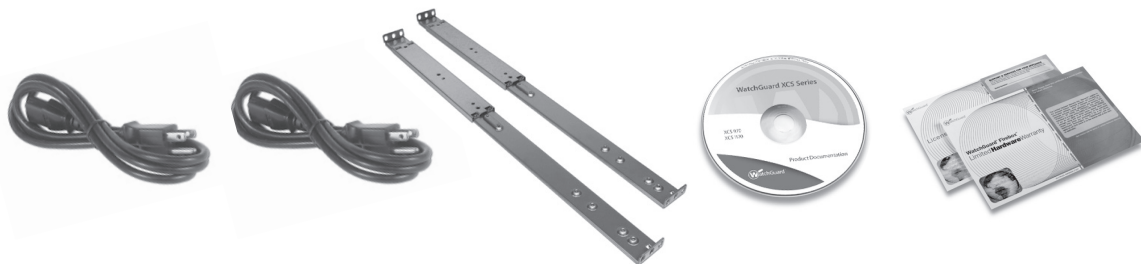


Quick Start Guide



Registration and Configuration

1 Register with LiveSecurity® Service

- Find the serial number on your device and record it.
 - Go to <http://www.watchguard.com/activate>
 - Log in.
- NOTE: If you are new to WatchGuard®, follow the instructions provided at the URL above to create a profile.
- Follow the instructions on the screen to enter your serial number and receive a feature key.

NOTE: If you will not have an Internet connection during the setup procedure, we recommend that you copy your feature key to a text file during the activation process.

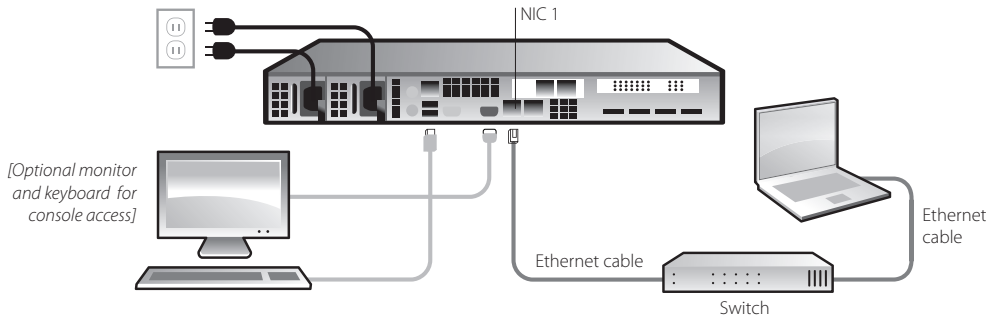
2 Configuration Checklist

- To configure your WatchGuard device, you must collect the following information about your network:

	Example Settings	Your Settings
Hostname	hostname	
Domain Name	example.com	
IP Address	10.0.0.1	
Subnet Mask	255.255.255.0	
Gateway Address	10.0.0.2	
Name Server Address	10.0.0.2	
Default User ID	admin	
Default Password	admin	
Organization Name	example.com	
Server Admin Email	admin@example.com	
Serial Number	B0E112345-1234	

Connection and Installation

3 Connect your WatchGuard® XCS



- Install the device in a secure location, preferably in a locked equipment rack or secure server room.
- Connect the power cord to the power socket on the back panel of the device.
- To access the Web UI Setup Wizard, connect to the WatchGuard XCS using one of these methods:
 - Connect your computer to the same network as the WatchGuard XCS through a network switch. Connect the WatchGuard XCS to the network switch using the first onboard Ethernet connector (NIC 1) at the left side of the back panel.
 - Connect your computer directly to the WatchGuard XCS using a cross-over Ethernet cable connected to the first onboard Ethernet connector (NIC 1) at the left side of the back panel.
- The default IP address on the WatchGuard XCS is 10.0.0.1/24.
- Configure your computer to use the IP address 10.0.0.2 with a netmask of 255.255.255.0 to connect to the WatchGuard XCS.
- Power on your device. Wait at least five minutes for the system to initialize before you try to connect to the WatchGuard XCS with a web browser.

NOTE: Ping is enabled on the configured network interface. You can ping the default address 10.0.0.1 to check connectivity before you connect with a web browser.
- Open a web browser and type <https://10.0.0.1> to start the Web UI Setup Wizard.

NOTE: Because the XCS device uses a self-signed certificate, you may see a certificate warning in your browser. It is safe to ignore the warning (Internet Explorer) or to add a certificate exception (Mozilla Firefox).



- On the Login page, type the default user ID (**admin**) and the default password (**admin**).
- Follow the instructions on the screen and complete the Wizard.

NOTE: Make sure you enter your feature key during the Wizard.
- Log in to the WatchGuard XCS Web UI with the user name **admin** and the new password you set in the Wizard.

Next Steps

Congratulations! You have finished the basic setup of your WatchGuard® XCS. You can use the Web UI to continue all configuration and management tasks.

WatchGuard XCS Configuration

- The XCS is initially configured for a deployment using a single interface on an internal network. To configure additional network interfaces, select **Configuration > Network > Interfaces**.
- A weekly full email report is scheduled to be emailed to the administrator each Saturday. To configure additional reports, select **Activity > Reports > Schedule**.

Software Updates

- The Security Connection feature contacts WatchGuard's support servers daily to check for new software updates.
- To install new software updates for your device, select **Administration > Software Updates > Updates**.

Additional Resources

For more information about how to configure your WatchGuard XCS:

- From the Web UI, select **Support > Online Manual**.
- See the WatchGuard XCS Installation Guide located on the Product Documentation CD.
- Go to <http://www.watchguard.com/help/documentation> and download the latest WatchGuard XCS documentation.
- Go to <http://www.watchguard.com/training/courses.asp> for training presentations and additional training resources.
- Go to <http://www.watchguard.com/forum> to view an interactive online user forum for the WatchGuard XCS moderated by senior WatchGuard support engineers.
- Go to <http://watchguard.custhelp.com> to view and search the knowledge base for information on specific WatchGuard XCS product issues.

WATCHGUARD TECHNICAL SUPPORT

1.877.232.3531
(U.S. and Canada)

+1.206.613.0456
(all other countries)

www.watchguard.com/support

ADDRESS: 505 Fifth Avenue South, Suite 500, Seattle, WA 98104

WEB: www.watchguard.com • **U.S. SALES:** 1.800.734.9905 • **INTERNATIONAL SALES:** +1.206.613.0895

© 2010 WatchGuard Technologies, Inc. All rights reserved. WatchGuard, the WatchGuard Logo, Firebox, Fireware, Core, Peak, and LiveSecurity are either trademarks or registered trademarks of WatchGuard Technologies, Inc. in the United States and/or other countries. All other trademarks and tradenames are the property of their respective owners. P.N. 352-3708-002 051010

