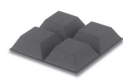
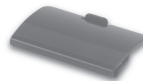


Quick Start Guide



Getting Started

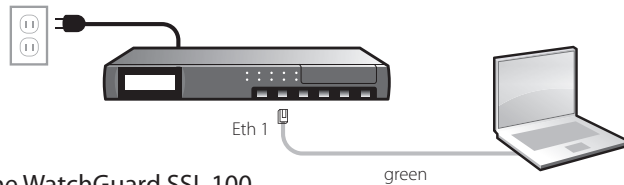
1 Register with LiveSecurity® Service

- Find the serial number on your device and record it.
- Go to <http://www.watchguard.com/activate>
- Log in.
NOTE: If you are new to WatchGuard, follow the instructions to create a profile.
- Follow the instructions on the screen.
- It is a good idea to download and extract your WatchGuard SSL feature key during activation. Extract the feature key on to the computer you will use to configure your WatchGuard SSL 100.



2 Connect your WatchGuard SSL 100

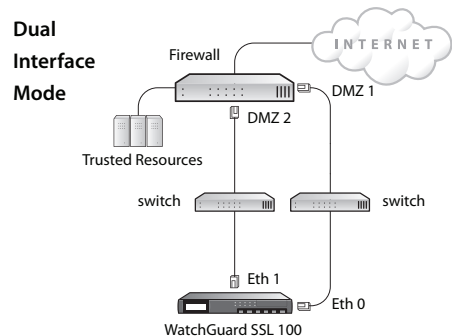
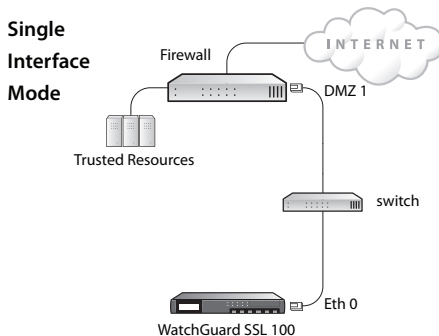
- Make sure your computer is configured with a static IP address on the **192.168.111.0/24** network.
NOTE: The default IP address on the WatchGuard SSL 100 is **192.168.111.1**.
- Connect the Ethernet interface on your computer to Eth1 on your WatchGuard SSL device.



- Power on the WatchGuard SSL 100.

3 Run the Quick Setup Wizard

- Open a web browser and type: **https://192.168.111.1:8443**. Follow the directions in the wizard to set up your WatchGuard SSL device.
NOTE: Because the WatchGuard SSL 100 uses a self-signed certificate, you may see a certificate warning in your browser. It is safe to ignore the warning (Internet Explorer) or to add a certificate exception (Mozilla Firefox).
- In the wizard, you must decide on the configuration mode that best suits your network. These diagrams show the two configuration modes:



Next Steps

Congratulations! You have finished basic network setup of your WatchGuard SSL 100. You can now put the WatchGuard SSL 100 in your network and use the WatchGuard SSL Web UI to continue configuration, management, and monitoring tasks.

If you configured your WatchGuard SSL in Single Interface mode...	If you configured your WatchGuard SSL in Dual Interface mode...
<ul style="list-style-type: none">• When you put the WatchGuard SSL in your network, make sure you connect to Eth0. Eth1 is available only during the Quick Setup Wizard.• Reset the IP address on your computer.• To connect to the WatchGuard SSL Web UI, open a web browser and type: https://[Eth0 IP address]:8443	<ul style="list-style-type: none">• When you put the WatchGuard SSL in your network, make sure you connect both Eth0 and Eth1.• Reset the IP address on your computer.• To connect to the WatchGuard SSL Web UI, open a web browser and type: https://[Eth1 IP address]:8443

If you did not upload your feature key in the wizard, you can get your feature key at <https://www.watchguard.com/archive/getcredentials.asp>. From the Web UI, go to **Monitor System > Feature Key** to upload it.

Download and Install Latest Software

- Go to www.watchguard.com/archive/softwarecenter.asp
- Find and download the latest version of WG SSL OS.
- From the Web UI, go to **Manage System > Device Update**.

For more information about how to configure your WatchGuard SSL 100, go to www.watchguard.com/help/documentation and open the current help system.

WATCHGUARD TECHNICAL SUPPORT

1.877.232.3531
(U.S. and Canada)

+1.206.613.0456
(all other countries)

www.watchguard.com/support

ADDRESS: 505 Fifth Avenue South, Suite 500, Seattle, WA 98104

WEB: www.watchguard.com • **U.S. SALES:** 1.800.734.9905 • **INTERNATIONAL SALES:** +1.206.613.0895

© 2009 WatchGuard Technologies, Inc. All rights reserved. WatchGuard and the WatchGuard Logo are either trademarks or registered trademarks of WatchGuard Technologies, Inc. in the United States and/or other countries. All other trademarks and tradenames are the property of their respective owners.
P.N. 352-3035-100 WGPE66377_052709

