

# Firebox® M290/390/590/690

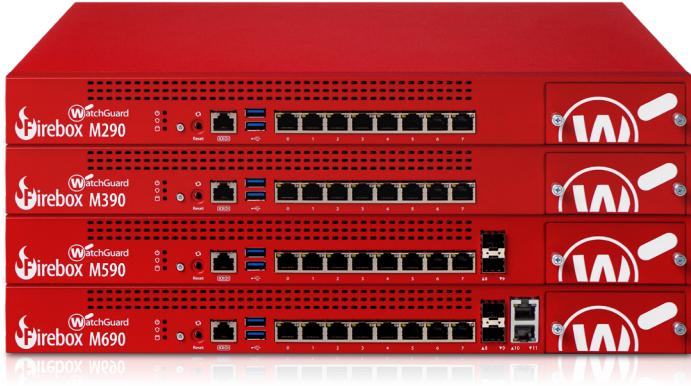
HW Models: CL2AE8, CL3AE8, CL6AE12

## Quick Start Guide

Guía Rápida

Guide de démarrage rapide

クイックスタート・ガイド

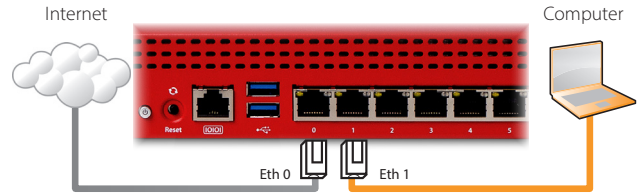


### Activate Your Firebox

1. Go to [www.watchguard.com/activate](http://www.watchguard.com/activate)
2. Log in to your WatchGuard account, or create a new account.  
*If you create a new account, return to [www.watchguard.com/activate](http://www.watchguard.com/activate) after you finish the account creation process.*

### Connect Your Firebox and Power It On

Make sure your computer is configured to use DHCP. When you connect to the Firebox, it will assign an IP address on the **10.0.1.0/24** network.



### Connect to the Web UI

1. Go to <https://10.0.1.1:8080>  
*You can safely ignore certificate warnings, because the Firebox uses a self-signed certificate.*
2. Log in with the user name **admin** and the passphrase **readwrite**.
3. Follow the directions in the Web Setup Wizard to configure your Firebox.
4. Install the Firebox in your network.

For more information, go to [www.watchguard.com/start](http://www.watchguard.com/start)

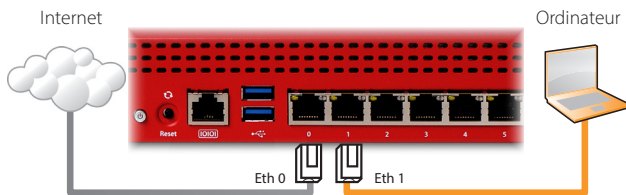
### Activation de votre appliance Firebox

**FRANÇAIS**

1. Rendez-vous à l'adresse [www.watchguard.com/activate](http://www.watchguard.com/activate)
2. Connectez-vous à votre compte WatchGuard ou créez un nouveau compte.  
*Si vous créez un nouveau compte, retournez à l'adresse [www.watchguard.com/activate](http://www.watchguard.com/activate) à la fin du processus de création du compte.*

### Branchement et mise sous tension de votre appliance Firebox

Assurez-vous que votre ordinateur est configuré pour utiliser le protocole DHCP. Lorsque vous connectez votre appliance Firebox, elle attribue une adresse IP sur le réseau **10.0.1.0/24**



### Connexion à l'interface utilisateur Web

1. Rendez-vous à l'adresse <https://10.0.1.1:8080>  
*Votre appliance Firebox utilisant un certificat auto-signé, vous pouvez, sans risque, ignorer les avertissements liés aux certificats.*
2. Connectez-vous avec le nom d'utilisateur **admin** et le mot de passe **readwrite**.
3. Suivez les instructions de l'Assistant de configuration Web pour configurer votre appliance Firebox.
4. Installez l'appliance Firebox sur votre réseau.

Pour plus d'informations, rendez-vous sur [www.watchguard.com/start](http://www.watchguard.com/start)

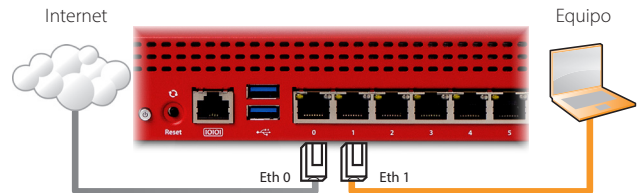
### Active su Firebox

**ESPAÑOL**

1. Visite [www.watchguard.com/activate](http://www.watchguard.com/activate)
2. Inicie sesión con su cuenta de WatchGuard o cree una cuenta nueva.  
*Si usted crea una cuenta nueva, regrese a [www.watchguard.com/activate](http://www.watchguard.com/activate) luego de finalizar el proceso.*

### Conecte su Firebox y Enciéndalo

Asegúrese de que su equipo esté configurado para usar DHCP. Cuando se conecte a su Firebox, este le asignará una dirección IP en la red **10.0.1.0/24**



### Conéctese a la Interfaz de Usuario Web

1. Visite <https://10.0.1.1:8080>  
*De manera segura, puede ignorar cualquier certificado de advertencia debido a que el Firebox usa un certificado con firma automática.*
2. Inicie sesión con el nombre de usuario **admin** y la frase de contraseña **readwrite**.
3. Siga las directivas en el asistente de instalación web para configurar su Firebox.
4. Instale el Firebox en su red.

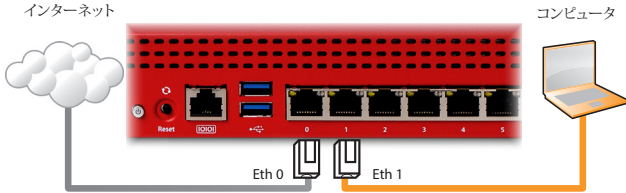
Para más información, vaya a [www.watchguard.com/start](http://www.watchguard.com/start)

## Firebox を起動する

1. [www.watchguard.com/activate](http://www.watchguard.com/activate) にアクセスします。
2. 登録済みの WatchGuard アカウントにログインするか、新しいアカウントを作成します。  
新しいアカウントを作成する場合は、アカウント作成プロセスが完了してからもう一度 [www.watchguard.com/activate](http://www.watchguard.com/activate) にアクセスしてください。

## Firebox を接続して電源を入れる

コンピュータが DHCP を使用するように設定されていることを確認します。  
Firebox への接続時に、**10.0.1.0/24** ネットワーク上の IP アドレスが割り当てられます。



## Web UI に接続する

1. <https://10.0.1.1:8080> にアクセスします。  
Firebox は自己署名証明書を使用するため、証明書に関する警告は無視してかまいません。
2. ユーザー名 admin とパスワード readwrite でログインします。
3. ウェブセットアップ・ウィザードの手順に従って、Firebox を設定します。
4. ウィザードが完了したら、ユーザー・アカウント admin と、ウィザードで設定した管理用パスワードで Web UI にログインします。

詳細については、[www.watchguard.com/start](http://www.watchguard.com/start)

## IMPORTANT NOTES

### DECLARATION OF CONFORMITY

WatchGuard Technologies, Inc.  
505 Fifth Ave. S., Suite 500  
Seattle, WA 98104-3892 USA

WatchGuard Technologies Inc. hereby declares that the product(s) listed below conform to the European Union directives and standards identified in this declaration.

**Product(s):**  
WatchGuard Product Name : Firebox M590/M690  
Hardware Model : CL6AE12

**EU Directive(s):**  
Low Voltage (2014/35/EC)  
Electromagnetic Compatibility (2014/30/EU)  
RoHS EU 2015/863(RoHS2)  
WEEE Directive 2012/19/EU  
REACH EC 1907/2006,  
SVHC 201

**Standard(s):**

**Safety:** EN 62368-1:2014 + A11:2017  
**Emission:** EN 55032: 2015 + AC: 2016  
FCC Part 15B  
ICES-003: Issue 7  
CISPR 32/AC:2016  
VCCI-CISPR 32:2016  
AS/NZS CISPR 32:2015

**Immunity:** EN 61000-3-2:2014  
EN 61000-3-3:2013  
EN 55035: 2017/A11 2020  
IEC 61000-4-2:2008  
IEC 61000-4-3:2006+A1:2007+A2:2010  
IEC 61000-4-4:2012  
IEC 61000-4-5:2014  
IEC 61000-4-6:2013  
IEC 61000-4-8:2009  
IEC 61000-4-11:2004

Signature: *Laurence Huang* 

Full Name: Laurence Huang  
Position: Manufacturing Program Manager  
Date: 12 April 2021

### DECLARATION OF CONFORMITY

WatchGuard Technologies, Inc.  
505 Fifth Ave. S., Suite 500  
Seattle, WA 98104-3892 USA

WatchGuard Technologies Inc. hereby declares that the product(s) listed below conform to the European Union directives and standards identified in this declaration.


**Product(s):**  
WatchGuard Product Name : Firebox M290  
Hardware Model : CL2AE8

**EU Directive(s):**  
Low Voltage (2014/35/EC)  
Electromagnetic Compatibility (2014/30/EU)  
RoHS EU 2015/863(RoHS2)  
WEEE Directive 2012/19/EU  
REACH EC 1907/2006,  
SVHC 201

**Standard(s):**

**Safety:** EN 62368-1:2014 + A11:2017  
**Emission:** EN 55032: 2015 + AC: 2016  
FCC Part 15B  
ICES-003: Issue 7  
CISPR 32/AC:2016  
VCCI-CISPR 32:2016  
AS/NZS CISPR 32:2015

**Immunity:** EN 61000-3-2:2014  
EN 61000-3-3:2013  
EN 55035: 2017/A11 2020  
IEC 61000-4-2:2008  
IEC 61000-4-3:2006+A1:2007+A2:2010  
IEC 61000-4-4:2012  
IEC 61000-4-5:2014  
IEC 61000-4-6:2013  
IEC 61000-4-8:2009  
IEC 61000-4-11:2004

Signature: *Laurence Huang* 

Full Name: Laurence Huang  
Position: Manufacturing Program Manager  
Date: 12 April 2021

### DECLARATION OF CONFORMITY

WatchGuard Technologies, Inc.  
505 Fifth Ave. S., Suite 500  
Seattle, WA 98104-3892 USA

WatchGuard Technologies Inc. hereby declares that the product(s) listed below conform to the European Union directives and standards identified in this declaration.


**Product(s):**  
WatchGuard Product Name : Firebox M390  
Hardware Model : CL3AE8

**EU Directive(s):**  
Low Voltage (2014/35/EC)  
Electromagnetic Compatibility (2014/30/EU)  
RoHS EU 2015/863(RoHS2)  
WEEE Directive 2012/19/EU  
REACH EC 1907/2006,  
SVHC 201

**Standard(s):**

**Safety:** EN 62368-1:2014 + A11:2017  
**Emission:** EN 55032: 2015 + AC: 2016  
FCC Part 15B  
ICES-003: Issue 7  
CISPR 32/AC:2016  
VCCI-CISPR 32:2016  
AS/NZS CISPR 32:2015

**Immunity:** EN 61000-3-2:2014  
EN 61000-3-3:2013  
EN 55035: 2017/A11 2020  
IEC 61000-4-2:2008  
IEC 61000-4-3:2006+A1:2007+A2:2010  
IEC 61000-4-4:2012  
IEC 61000-4-5:2014  
IEC 61000-4-6:2013  
IEC 61000-4-8:2009  
IEC 61000-4-11:2004

Signature: *Laurence Huang* 

Full Name: Laurence Huang  
Position: Manufacturing Program Manager  
Date: 12 April 2021

### WATCHGUARD TECHNICAL SUPPORT

1.877.232.3531 +1.206.613.0456  
(U.S. and Canada) (all other countries)

[www.watchguard.com/support](http://www.watchguard.com/support)



ADDRESS: 505 Fifth Avenue South, Suite 500, Seattle, WA 98104

U.S. SALES: 1.800.734.9905 • INTERNATIONAL SALES: +1.206.613.0895

WEB: [www.watchguard.com](http://www.watchguard.com)

To see additional certification information and languages, go to [www.watchguard.com/start](http://www.watchguard.com/start)