



SOHO 6 Wireless De-manufacturing Instructions

Document Number: 480-2523-001

1.0 Purpose

This instruction defines the de-manufacturing process for the recovery of this product family as it pertains to recycling of the major product components.

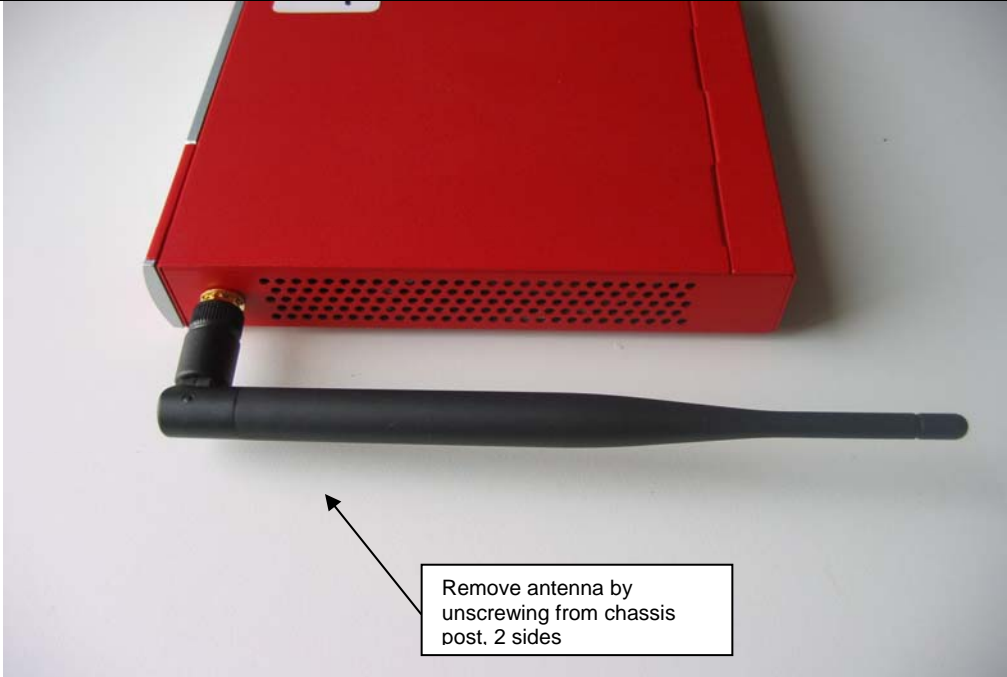
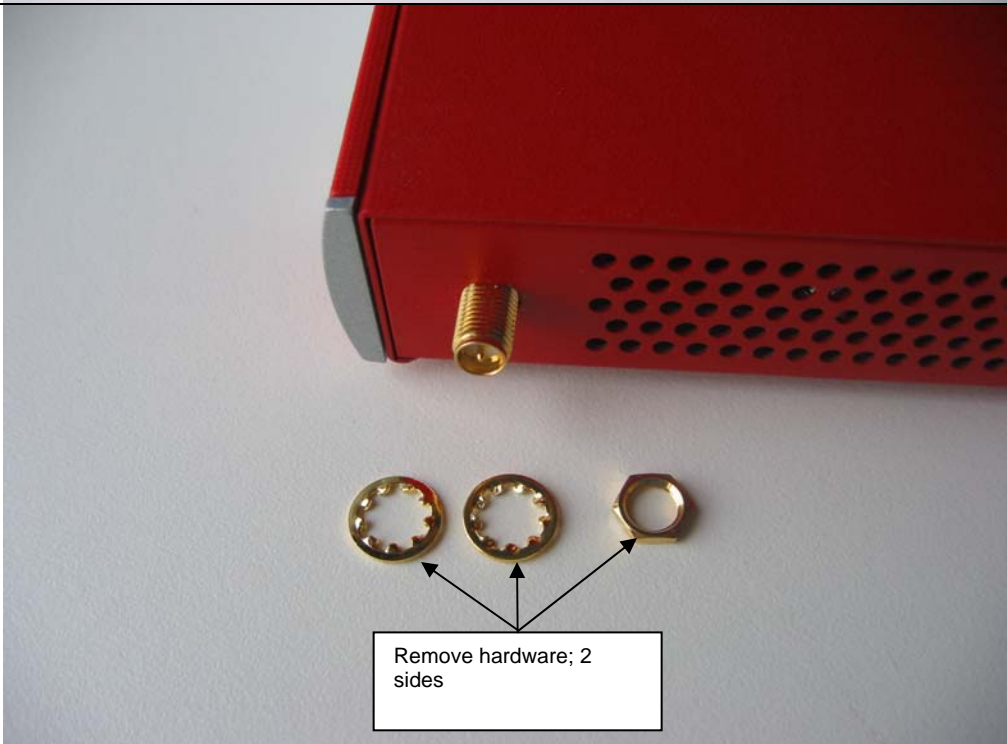
2.0 Scope

This instruction applies to the following product family and family part numbers.

Product Family Name	Family part #'s (not necessarily inclusive)
Firebox SOHO 6 Wireless	<ul style="list-style-type: none">• Firebox SOHO 6 Wireless; all revisions

3.0 Instruction

3.1 -Remove wireless antenna and antenna hardware

Material removed (P/N & material type)	Instruction visual
<p>Antenna 1305-002 - TPE, PC, reverse SMA connector, RG-178 coaxial cable; 2.4Ghz; 2 ea.</p>	 <p>Remove antenna by unscrewing from chassis post. 2 sides</p>
<p>Washer No p/n - Gold plated brass; 2 ea.</p> <p>Nut No p/n - Gold plated brass</p>	 <p>Remove hardware; 2 sides</p>

Design for Manufacturing and Environment Document

3.2 -Remove labels, rubber feet and screw, and separate top from bottom

Material removed (part Desc or P/N & material type)	Instruction visual
<p>Labels Cert. label – Metalized poly-film Serial number: 0823-00x - Poly-film Transmit Cert/FCC/CE: 2111-00x – Metalized Poly-film</p> <p>Rubber Feet 1422-002 - Polyurethane, 4 ea.</p> <p>Remove screw 0863-003 - Phillips head, stainless steel</p>	<p>The top photograph shows the back of a red rectangular device. Four red rubber feet are attached to the corners. A large white label is in the center, and a smaller label with a barcode and serial number is at the bottom. Callout boxes with arrows point to the rubber feet, the labels, and a screw at the bottom center.</p> <p>The bottom photograph shows the device separated into two parts. On the left is a grey metal chassis with a red top cover. On the right is the red top cover with the labels and rubber feet. An arrow points from the text 'Separate top from bottom' to the two separated parts.</p>

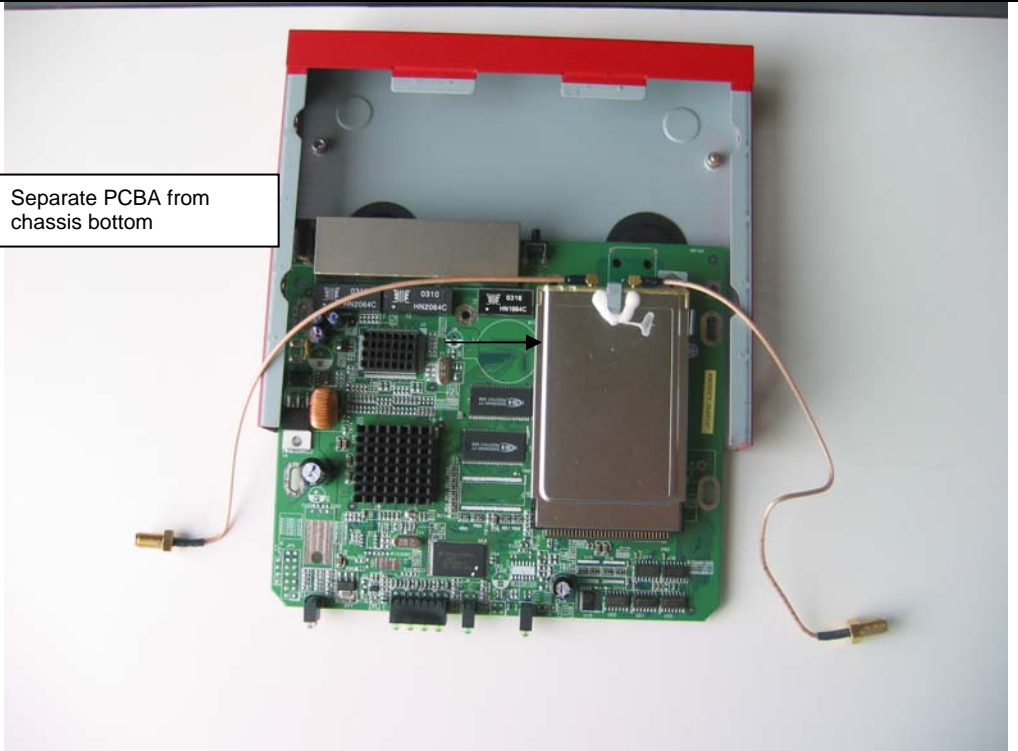
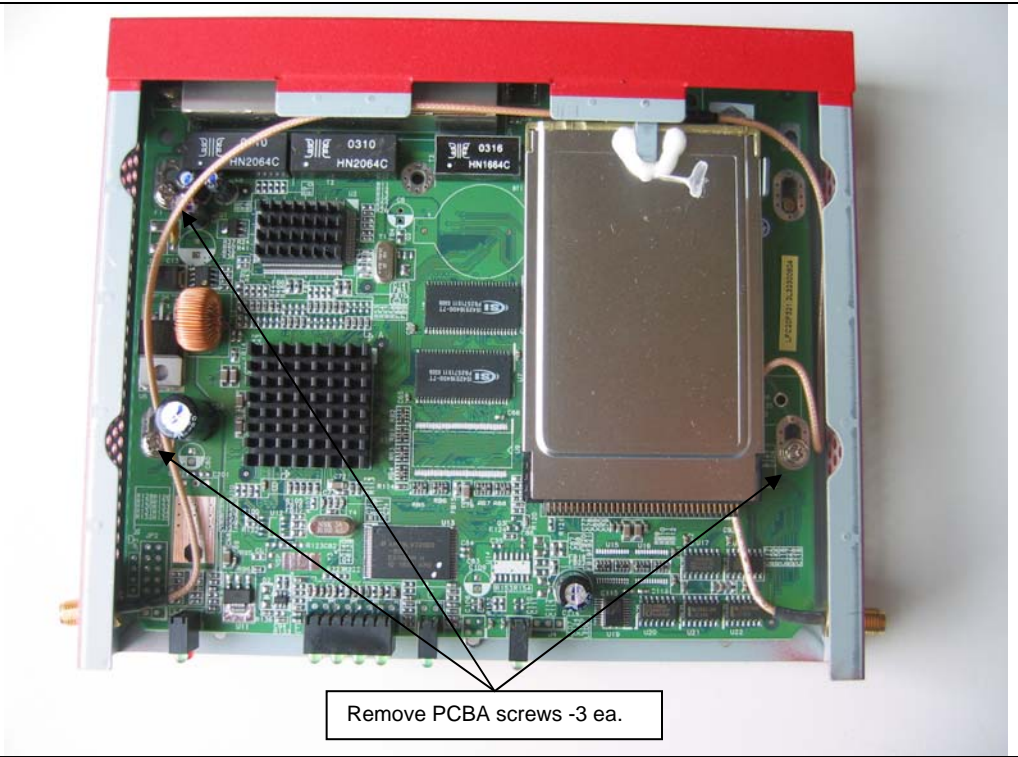
3.3 –Remove screws and separate main PCBA from chassis bottom

Material removed (P/N & material type)

Instruction visual

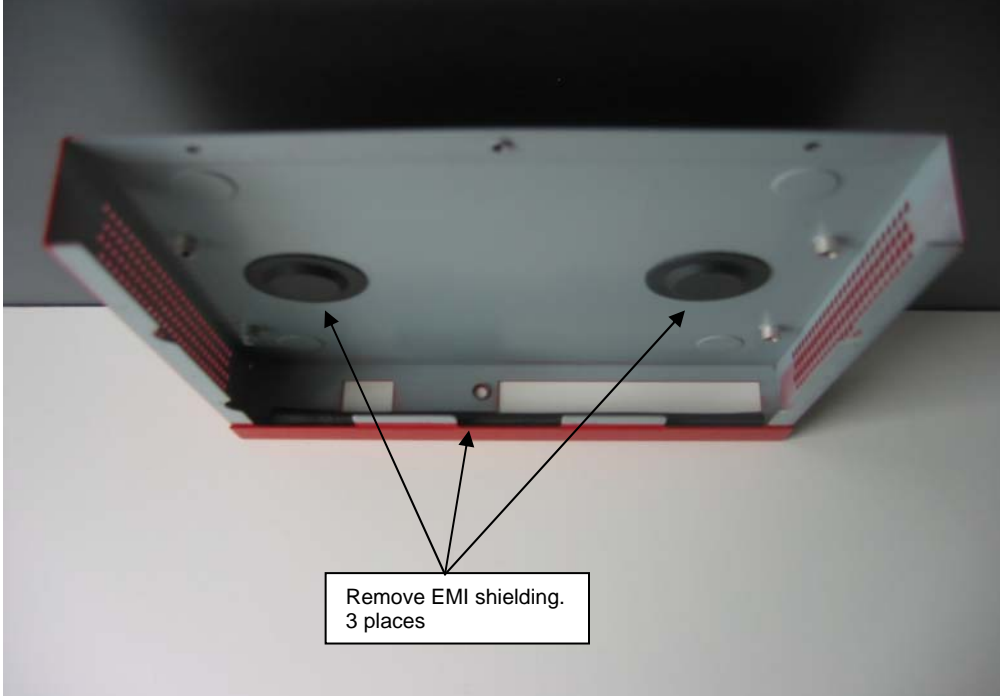
Screws

0863-002 - Phillips head, stainless steel, 3 ea

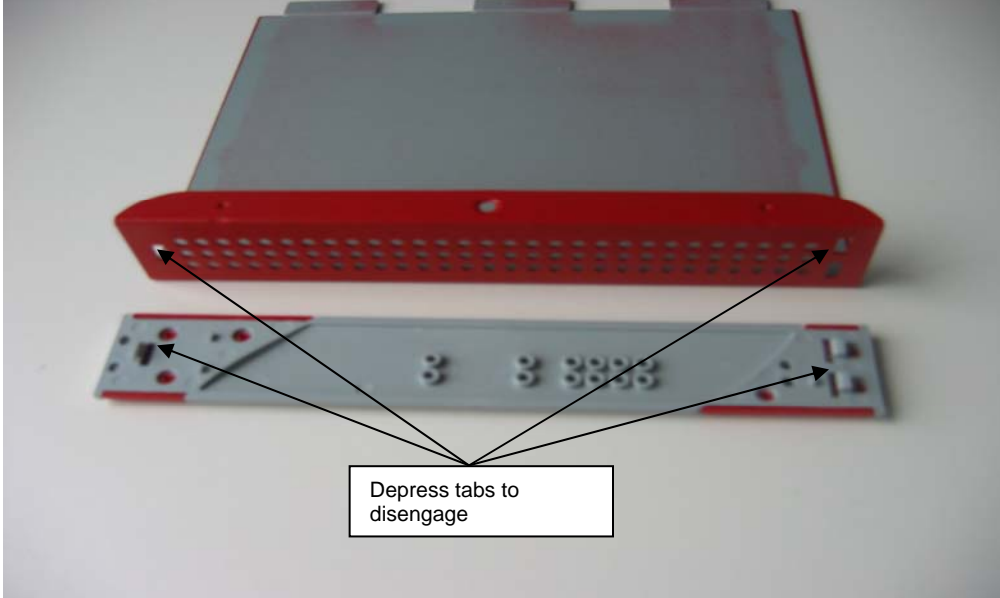


3.4 – Remove EMI shielding

Design for Manufacturing and Environment Document

Material removed (P/N & material type)	Instruction visual
<p>Painted metal enclosure 22Ga. EG w/powder coat (Interpon 700 - epoxy/polyester)</p> <p>EMI Shielding Mylar</p>	 <p>Remove EMI shielding. 3 places</p>

3.5 – Remove bezel from unit top - depress tabs to disengage

Material removed (P/N & material type)	Instruction visual
<p>Painted metal enclosure 22Ga. EG w/powder coat (Interpon 700 - epoxy/polyester)</p> <p>Bezel PC/ABS</p>	 <p>Depress tabs to disengage</p>

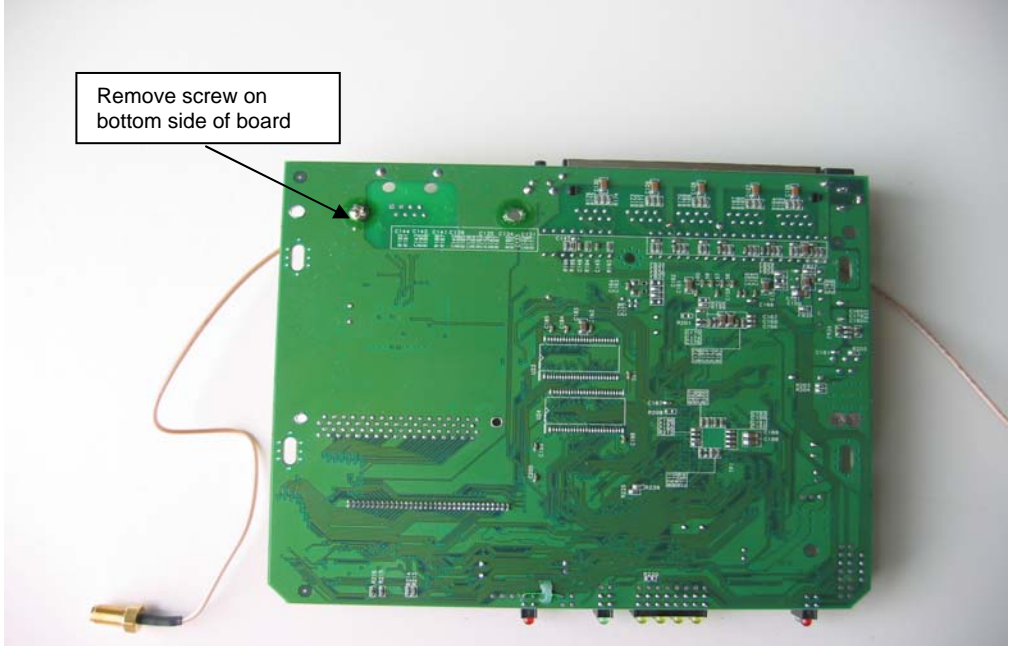
3.6 – Remove RF module (mini-PCI) clip and disconnect module from main PCBA

Design for Manufacturing and Environment Document

Material removed (P/N & material type)

Instruction visual

Screw
0863-002 - Phillips head, stainless steel




Module clip
PC/ABS

Main PCBA
Printed circuit assembly



Design for Manufacturing and Environment Document

3.7 –Disconnect RF cables from RF module

Material removed (P/N & material type)	Instruction visual
<p>RF Module Mini-PCI module with RF PCBA</p> <p>RF Cable Coaxial cable assembly. 6cm</p> <p>RF Cable Coaxial cable assembly. 19.5cm</p>	

4.0 Applicable Documents

5.0 Revision History

REV. NO.	REV. DATE	REVISED SECTION	REASON	ECO#
A	10/10/2005	n/a	Initial Release	0712