

How to identify your WatchGuard device model number

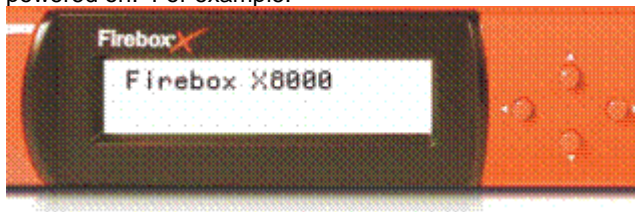
If you don't know the model number of your WatchGuard appliance, there are several ways that you can identify this information. Select the link below to learn more:

Look at the LCD display on the device	1
Use WatchGuard System Manager	1
Use the Fireware XTM Web UI	2
By Serial Number prefix	2
Use the Firebox X Edge Web Manager	4

Look at the LCD display on the device

Applies to all devices except tabletop appliances


For Firebox X Core, Peak and XTM devices, the appliance model number appears on the LCD when the device is powered on. For example:

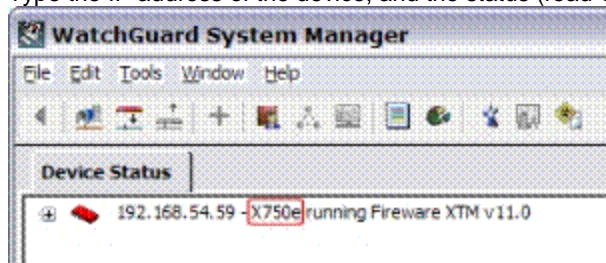


On some Firebox models the LCD display shows a rotating series of status messages. If you do not see the model number on the LCD display, press the up arrow to make the Firebox show the model number.

Use WatchGuard System Manager

If you have WatchGuard System Manager installed, use these steps to identify your Firebox model number:

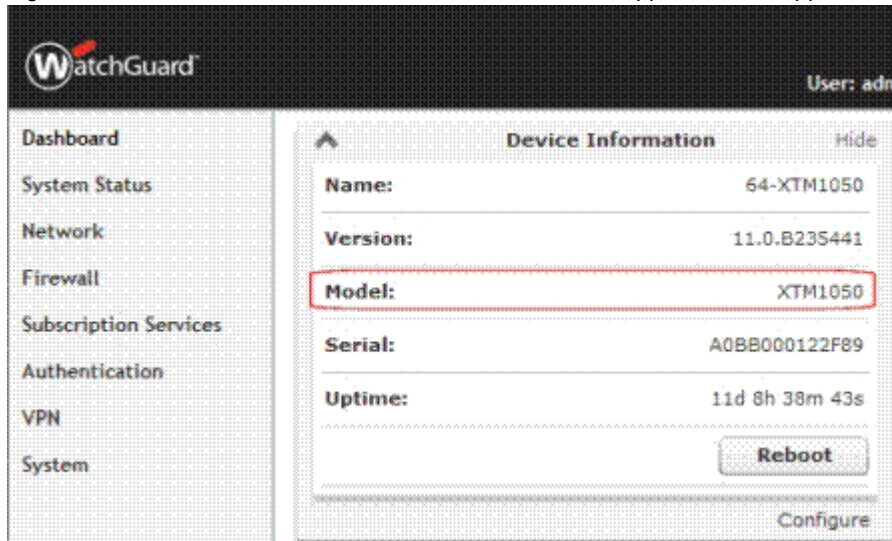
1. Launch WatchGuard System Manager.
2. Select **File > Connect to Device** or click  in the WSM toolbar.
3. Type the IP address of the device, and the status (read-only) passphrase.



4. Locate the model number near the device icon, after the device IP address.

Use the Fireware XTM Web UI

If your Firebox uses Fireware XTM, you can log into the Fireware XTM Web UI to find the model number. When you log into the Fireware XTM Web UI, the device information appears in the upper left of the Dashboard page.



By Serial Number prefix

The Serial Number (S/N) prefix, which is the first 4 digits of the S/N of the appliance, can be used to identify the model number.

Model upgrades results in exceptions to this rule. The S/N mask continues to represent the original hardware model, but renewals need to be purchased for the appropriate upgrade model. If your model has been upgraded, the methods above still apply.

XTM Appliances		
S/N Prefix	Model Name	Family
80BD	XTM 330	XTM 3 Series
70A0	XTM 21	XTM 2 Series
70A2	XTM 22	
70A4	XTM 23	
70A1	XTM 21W	
70A3	XTM 22W	
70A5	XTM 23W	
80B3	XTM 505	XTM 5 Series
80B0	XTM 510	
80B1	XTM 520	
80B2	XTM 530	

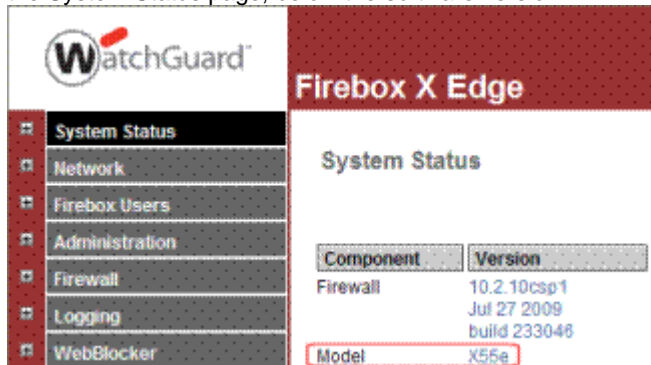
80B5	XTM 810	XTM 8 Series
80B6	XTM 820	
80B7	XTM 830	
A0BB	XTM 1050	XTM 1050
80BC	XTM 2050	XTM 2050

Firebox e-Series Appliances		
9086	X 550e	Firebox X Core
9085	X750e	
9087	X1250e	
9095	X5500e	Firebox X Edge
9096	X6500e	
9097	X8500e	
9098	X8500e-F	
7072	X 10	Firebox X Peak
7074	X 20	
7076	X 55	
7273	X 10W	
7275	X 20W	
7277	X 55W	

XCS Appliances	
S/N Prefix	Model Name
B0E1	XCS 170
B0E2	XCS 370
B0E3	XCS 570
B0E4	XCS 770
B0EF	XCS 770R
B0E5	XCS 970
B0E6	XCS 1170
B0EA	QMS 500
B0EB	QMS 1000

Use the Firebox X Edge Web Manager

If you have a Firebox X Edge or Firebox X Edge e-Series that uses any version of Edge software (prior to version 11 of Fireware XTM), you can log into the Web UI of the Edge to see the model number. The model number appears in the System Status page, below the software version.



The screenshot shows the WatchGuard Firebox X Edge Web Manager interface. On the left is a sidebar with a red background and white text, containing a WatchGuard logo and a list of navigation links: System Status, Network, Firebox Users, Administration, Firewall, Logging, and WebBlocker. The main content area has a red header bar with the text "Firebox X Edge". Below the header, the "System Status" section is displayed. It contains a table with two columns: "Component" and "Version". The table lists the Firewall version as 10.2.10csp1, with a date of Jul 27 2009 and a build number of 233046. Below this, the "Model" is listed as X55e, which is highlighted with a red rectangular box.

Component	Version
Firewall	10.2.10csp1 Jul 27 2009 build 233046
Model	X55e