

# WatchGuard SSL VPN Configuration for SMS PASSCODE

© SMS PASSCODE® 2014

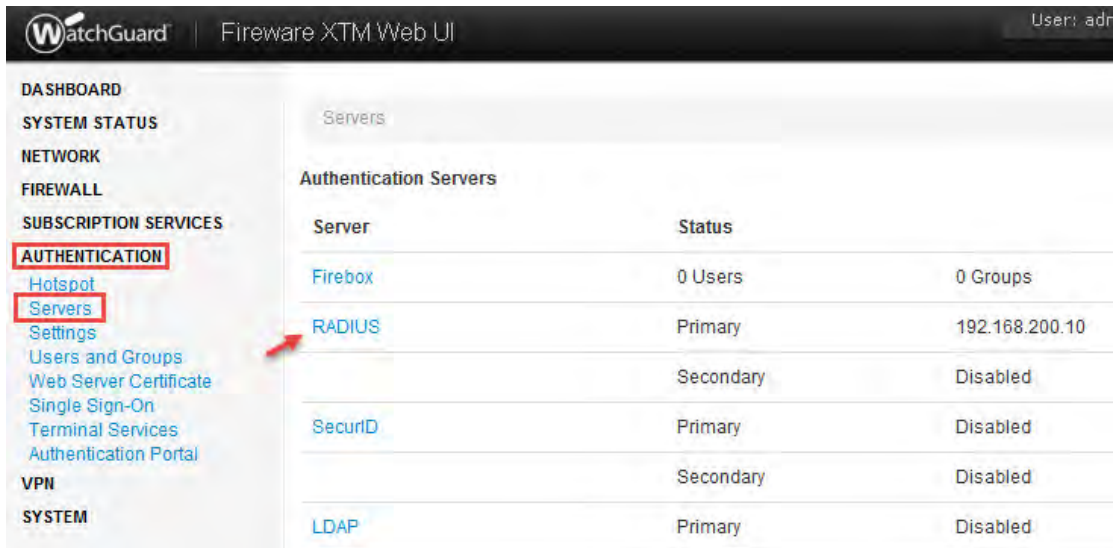


## WatchGuard SSL VPN Configuration for SMS PASSCODE®

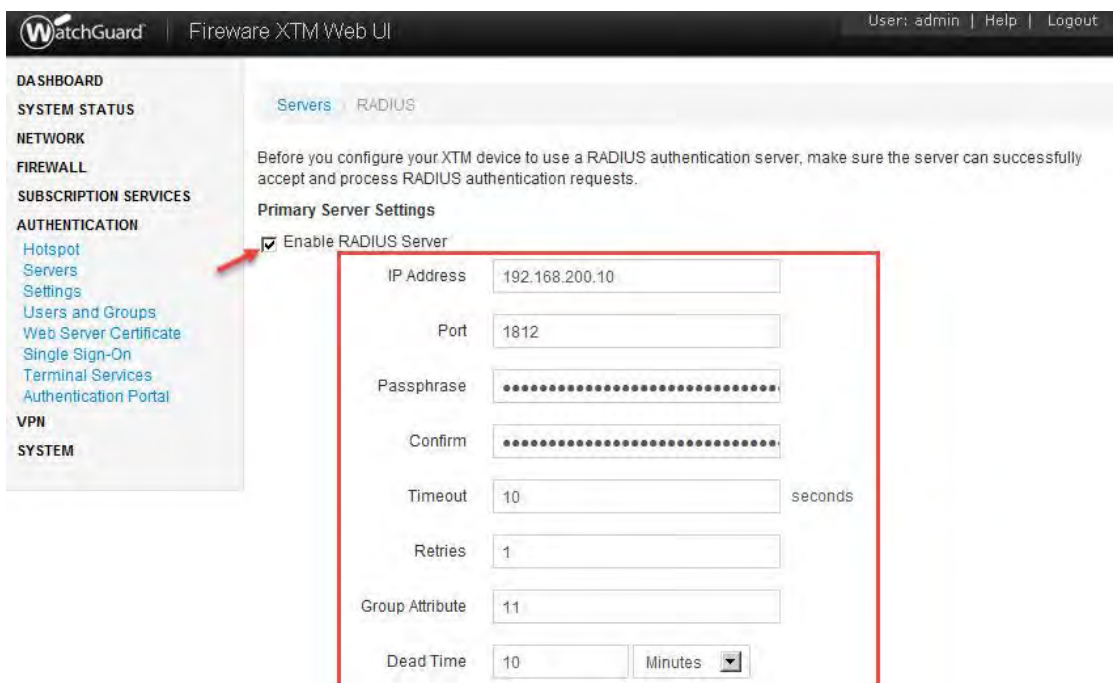
This guide outlines the process of configuring a WatchGuard XTM Firewall for SSL VPN RADIUS Authentication with SMS PASSCODE®.

### WatchGuard Configuration

From the XTM Web interface, navigate to 'Authentication' → 'Servers' → 'RADIUS'



Enter the details of your SMS PASSCODE RADIUS server and click 'Save'. The 'Passphrase' is the Shared Secret key that must also be entered on the NPS.



Navigate to 'VPN' → 'Mobile VPN with SSL' → 'Authentication'

Enable Mobile SSL VPN and set RADIUS as the default Authentication Server and click 'Save'.

WatchGuard | Fireware XTM Web UI | User: admin | Help | Logout

**VPN**

- Branch Office VPN
- BOVPN Virtual Interfaces
- Phase2 Proposals
- Mobile VPN with IPSec
- Mobile VPN with PPTP
- Mobile VPN with SSL**
- Mobile VPN with L2TP
- Global Settings

Mobile VPN with SSL

When you activate Mobile VPN with SSL, the "SSLVPN-Users" group and the "WatchGuard SSLVPN" policy are created to allow Mobile VPN with SSL connections from the Internet to the external interface.

Activate Mobile VPN with SSL

General | **Authentication** | Advanced

**Authentication Server Settings**

Select one or more authentication servers. The first server in the list is the default authentication server.

Select	Authentication Server
<input checked="" type="checkbox"/>	RADIUS (Default)
<input type="checkbox"/>	Firebox-DB

Default

Auto reconnect after a connection is lost

Force users to authenticate after a connection is lost

Allow the Mobile VPN with SSL client to remember password

Define users and groups to authenticate with Mobile VPN with SSL. The users and groups you define are automatically included in the "SSLVPN-Users" group.

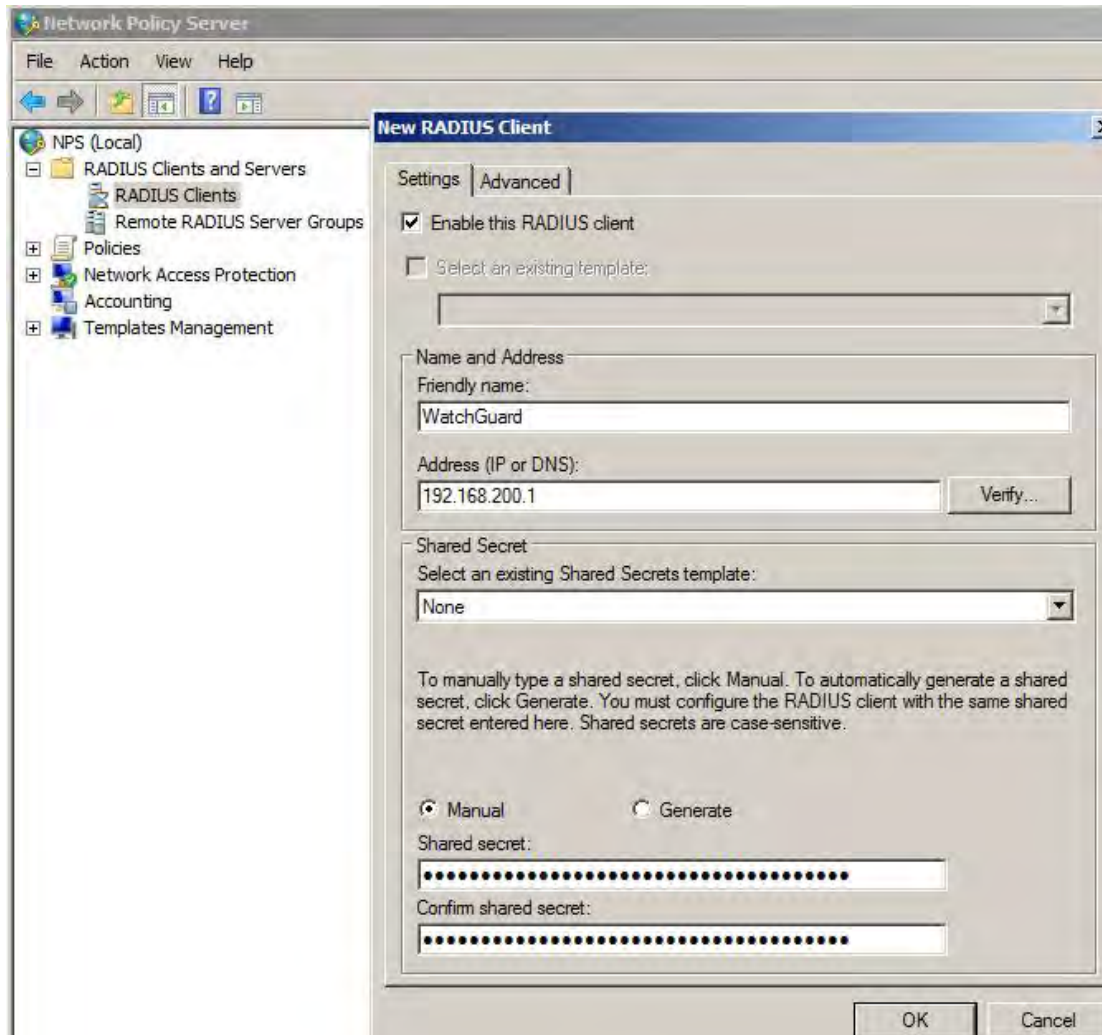
	Name	Type	Authentication Server
<input type="checkbox"/>	SSLVPN-Users	Group	Any

Add Remove

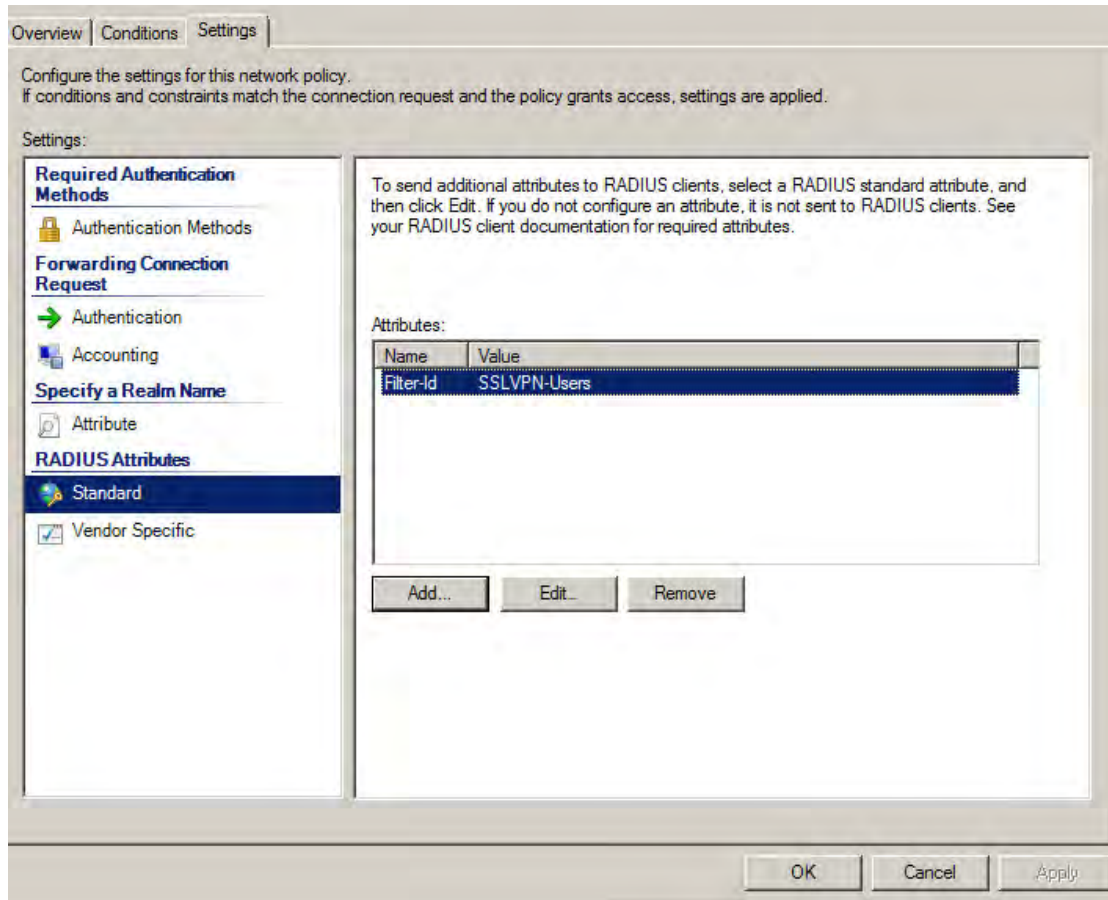
**Save**

## NPS Configuration

On the NPS / SMS PASSCODE RADIUS server, open the Network Policy Server management console. Navigate to 'RADIUS Clients' and create a new client.



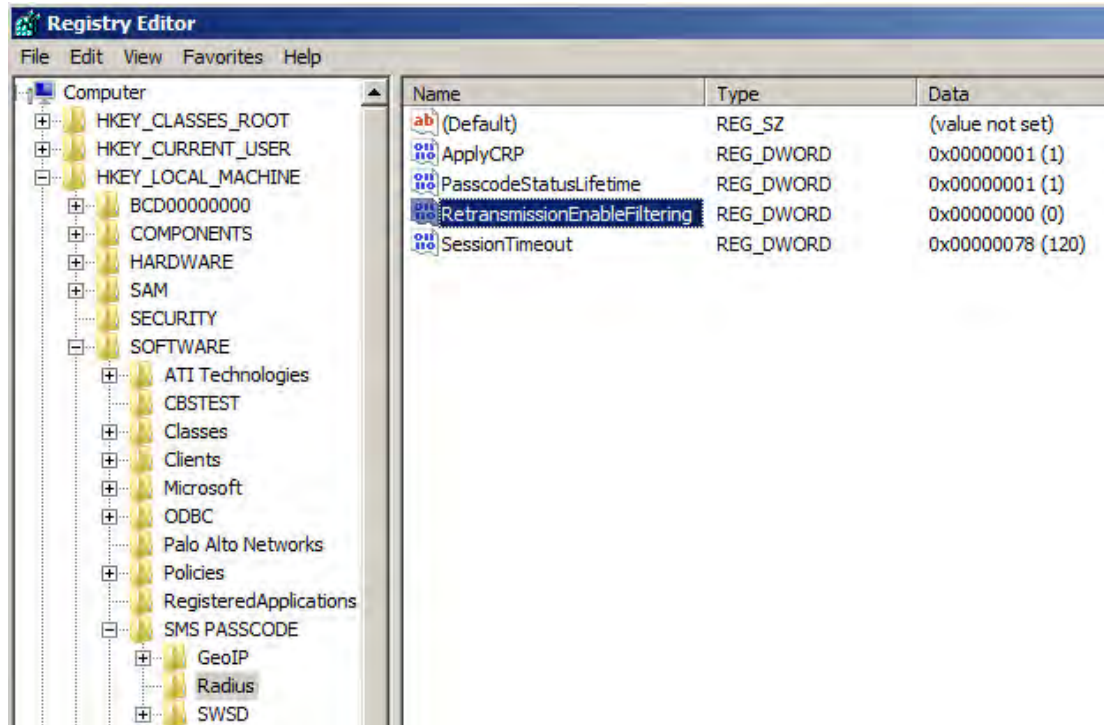
Navigate to 'Policies' → 'Connection Request Policies' and modify or create a new policy matching incoming RADIUS requests. Ensure that the RADIUS Attribute 11 – Filter-Id is set to 'SSLVPN-Users'



Note: For detailed instructions on how to configure the NPS, consult the SMS PASSCODE Administrator's Guide.

Open a Registry Editor and navigate to HKLM\Software\SMS PASSCODE\Radius

Create a new DWORD, name it 'RetransmissionEnableFiltering' and give it a value of "0"

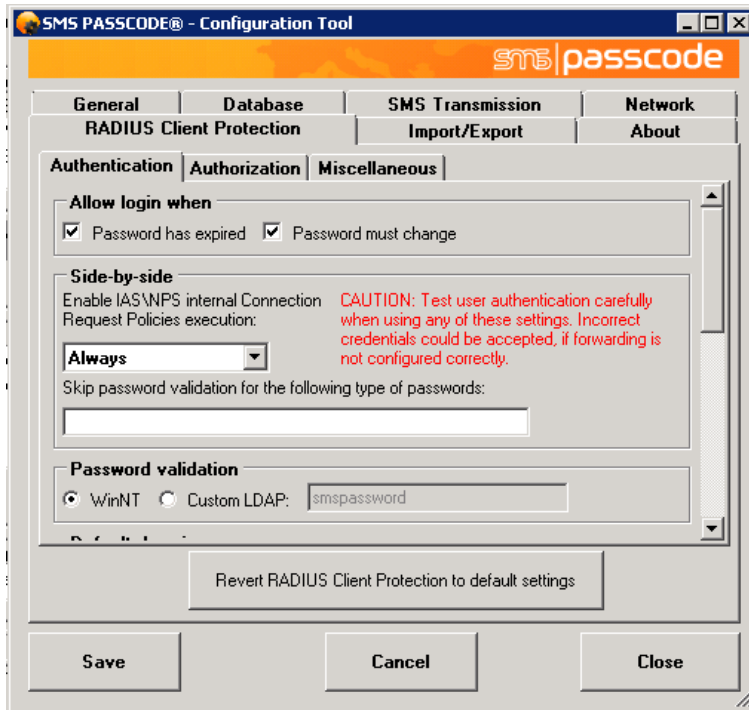




## Configuration in SMS PASSCODE®

Open the SMS PASSCODE Configuration Tool and navigate to the 'RADIUS Client Protection' tab.

Set side by side to 'Always' and click 'Save'.



### About SMS PASSCODE®

SMS PASSCODE is the leading technology in two- and multi-factor authentication using your mobile phone. To protect against the rise in internet based identity theft hitting both consumers and corporate employees, SMS PASSCODE offers a stronger authentication via the mobile phone SMS service compared to traditional alternatives. SMS PASSCODE installs in minutes and is much easier to implement and administer with the added benefit that users find it an intuitively smart way to gain better protection. The solution offers out-of-the-box protection of standard login systems such as Citrix, Cisco, Microsoft, VMware View, Juniper and other IPsec and SSL VPN systems as well as web sites. Installed at thousands of sites, this is a proven patent pending technology. In the last years, SMS PASSCODE has been named to the Gartner Group Magic Quadrant on User Authentication, awarded twice to the prestigious Red Herring 100 most interesting tech companies list, a Secure Computing Magazine Top 5 Security Innovator, InfoSecurity Guide Best two-factor authentication, a Citrix Solution of the Year Finalist, White Bull top 30 EMEA companies, a Gazelle 2010, 2011, 2012 and 2013 Fast Growth firm and a ComOn most promising IT company Award. For more information visit: [www.smspasscode.com](http://www.smspasscode.com) or our blog at [blog.smspasscode.com](http://blog.smspasscode.com).